

Neat and clear design

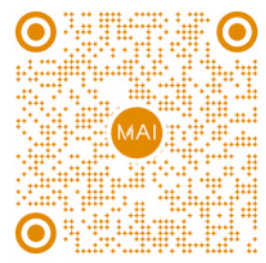
18.5" rotatable monitor



Hook design prevents messy cables

Four active probe connectors

Lower down power supply avoids current interference

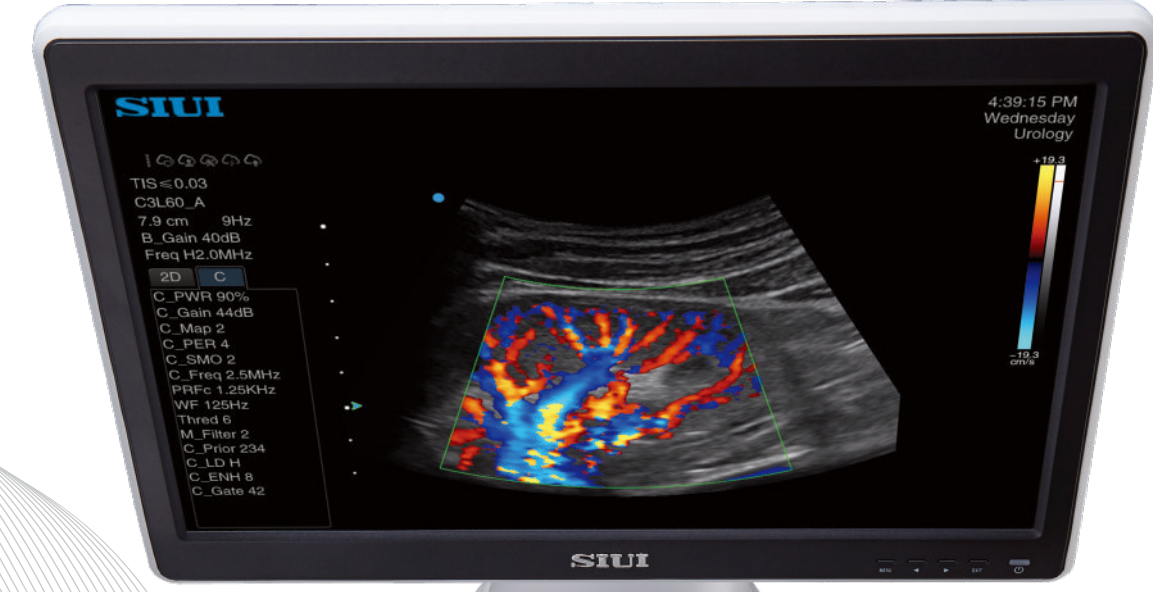


MAI

Anything, Anytime, Anywhere
Live Service for Imaging

Apogee 3300

Digital Color Doppler Ultrasound Imaging System



SIUI

HEADQUARTERS:

Shantou Institute of Ultrasonic Instruments Co., Ltd.
Add: No.77, Jinsha Road, Shantou 515041 Guangdong, China
Tel: 86-754-8825 0150 <http://www.siui.com> E-mail: siui@siui.com

HONG KONG OFFICE:

Shantou Institute of Ultrasonic Instruments (HK) Co., Ltd.
Add: Room 2101, Tung Chiu Commercial Center 193 Lockhart Road, HK
Tel: 852-2891 6722 Fax: 852-2891 6723



All rights reserved to SIUI 2023
Apogee 3300Neo EN25230222

SIUI



Ultrasound imaging's tentacle has reached to all kinds of application fields, regardless of the model's level. Doctors now have higher expectations for better images and price. SIUI senses the trends and responds with the newly upgrade Apogee 3300 Neo. With high image performance and complete application package, we believe that the upgrade model will satisfy doctors with the most competitive quality and price in its kind.

Leading imaging technology from high-end models

Balanced echo compensation

The model transplants Balanced echo compensation technology from the high-end platform. It effectively compensates the weak echo signals and restrains the hyperecho signals according to the gray scale distribution, and delivers much more uniform image.

Fusion THI 2.0

Based on the new generation of inversion tissue harmonic, Fusion THI 2.0 integrates fundamental wave and harmonic wave in the far field. With greatly enhanced tissue harmonic wave, it delivers penetration-improved image by effectively increasing image resolution and tissue contrast.

Fuzzy logic flow

Fuzzy logic algorithm is applied to set each key parameter in specific range. Different parameter weight is designed according to targeted tissue so as to furthest restore flow signal, enhance flow sensitivity and reduce wall motion noise.

Xbeam 2.0

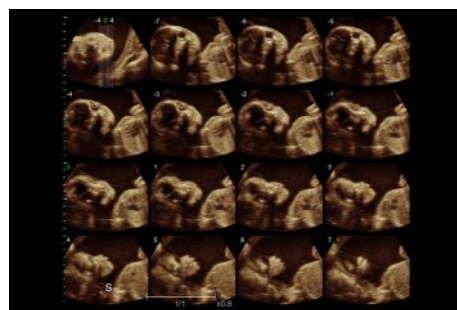
The upgraded Xbeam is a new processing mode based at the front end of ultrasound beamforming. With steerable beam angle and the high frame rate, it effectively increases the spatial resolution and reduces tissue shadow. Xbeam applies to most kinds of probes.

Complete application package fulfills your needs

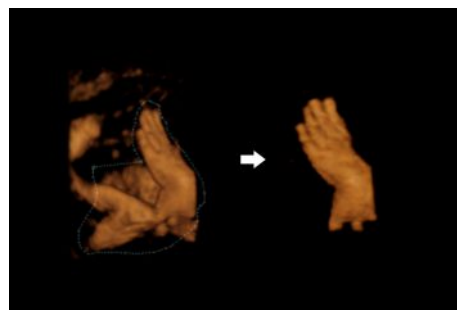
Apogee 3300 Neo is all-in-one designed to meet different needs in all applications.

Women's healthcare

nSlice captures the needed section promptly and accurately

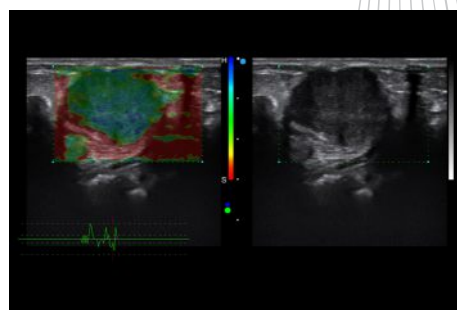


Any Cut lassoes the image agilely



Elastography

visualizes the stiffness of tumor intuitively



Efficient auto solutions

Auto fit: automatic image processing adjustment

Auto trace: automatic tracing pw spectrum for calculation

Auto volume: automatic volume calculation

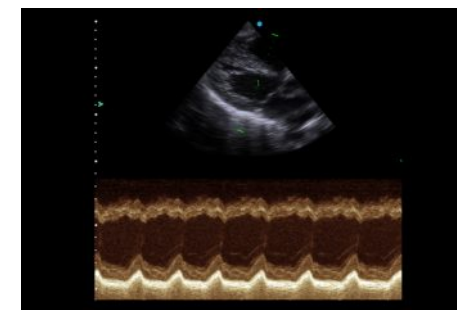
Semi auto EF: semi-automatic tracing LV for EF calculation

Cardiovascular and radiology

Auto IMT helps measure the intima-media thickness of the carotid artery wall



AMM empowers exact analysis of cardiac structure movement



Needle enhancement easily visualizes the puncture process

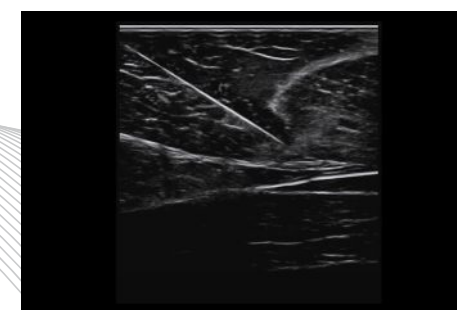


Image Gallery



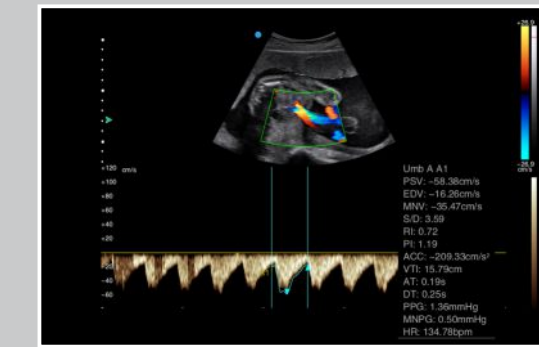
Early OB



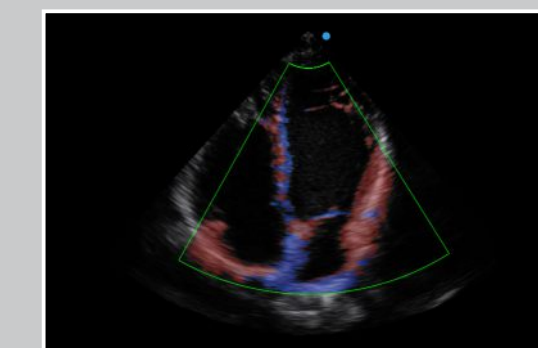
BPD



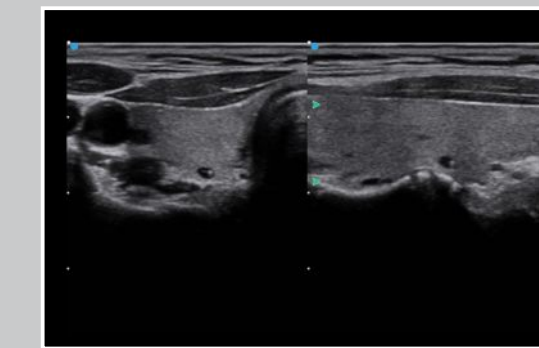
Fetal face with 4D



Fetal umbilical artery with PW



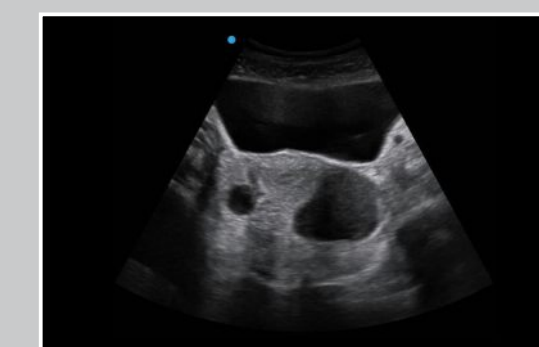
Four chambers with TDI



Thyroid cyst with 2B



Fetal polycystic kidney



Chocolate cyst of ovary